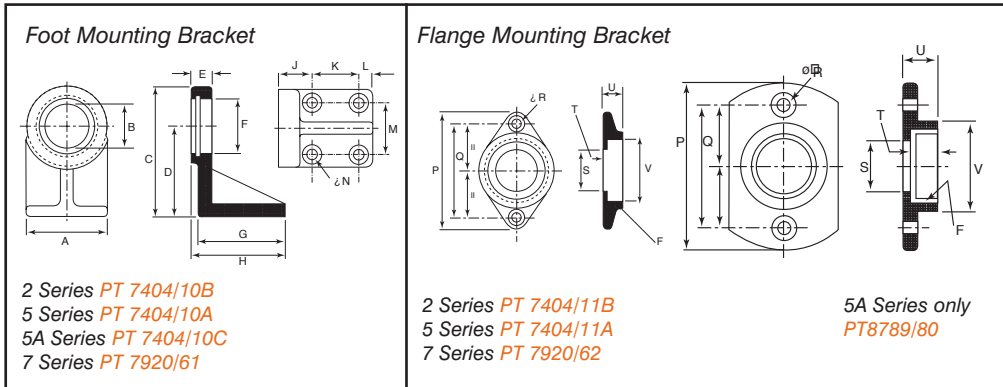


Accessories



Foot Mounting Bracket

All dimensions are in mm

	A	B	C	D	E	F	G	H	J	K	L	M	N
2 Series	41.3	22.3	61.3	47.6	8.3	1 1/4 - 20UN	44.5	47.6	10.3	23.8	7.1	27.0	5.2
Part No. PT7404/10B						LH							
5R Series	41.3	22.3	61.3	47.6	8.3	1 3/8 18UN	44.5	47.6	10.3	23.8	7.1	27.0	5.2
Part No. PT7404/10A													
5A Series	41.3	22.3	61.3	47.6	8.3	1 1/2 18 UN	44.5	47.6	10.3	23.8	7.1	27.0	5.2
Part No. PT7404/10C													
7 Series	54.0	-	81.0	54.0	-	1 3/4 16UN	49.2	52.4	17.0	22.3	8.0	38.0	5.2
Part No. PT7920/61													

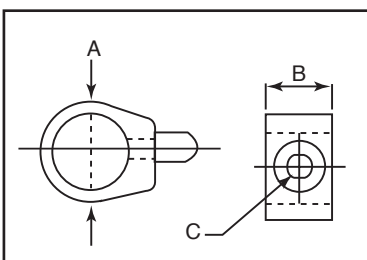
Flange Mounting Bracket

All dimensions are in mm

	P	Q	R	S	T	U	V
2 Series	65.1	52.4	5.2	22.3	8.3	10.3	41.3
Part No. PT7404/11B							
5R Series	65.1	52.4	5.2	22.3	8.3	10.3	41.3
Part No. PT7404/11A							
5A Series	65.1	52.4	5.2	22.3	9.9	11.9	42.8
Part No. PT8789/80							
7 Series	82.5	66.6	5.2	-	-	16.7	54.0
Part No. PT7920/62							

Exhaust Adaptors

These fit on the outside diameter of the motors to enclose the peripheral exhaust ports. They are fitted with silencers which may be removed for the piping of the exhaust air.



Part Number	A	B	Silencer Thread
2 Series			
Part No. PT7992/58A	51	27	3/8" NPT
PT7992/58B			3/8" BSP
5 Series			
Part No. PT7400/520A	65	38	1/2" NPT
PT7400/520B			1/2" BSP
7 Series			
Part No. PT7920/64A	77	38	1/2" NPT
PT7920/64B			1/2" BSP

Not applicable to 5A Series Motors
 All dimensions in mm.

1mm = 0.03937 inches